

FREEHOLD



House - Semi-Detached

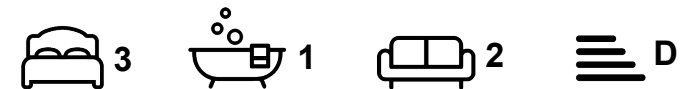
# WESTWICK ROAD, SHEFFIELD, S8

Guide price

# £300,000

## FEATURES

- Traditional three bedroom semi detached home on a generous plot
- Huge potential to modernise, extend and add long-term value (STPP)
- Block paved driveway, carport and garage with electric door
- Direct garden access from both the kitchen and dining room
- Flooded with natural light throughout



  
**HIGHGATES**  
SALES & LETTINGS

# 3 Bedroom House - Semi-Detached located in Sheffield

Guide Price £300,000 - £325,000

A traditional three bedroom semi detached house occupying an excellent plot on one of Greenhill's increasingly sought after residential roads. Offering huge potential and flooded with natural light throughout, this is the kind of property that experienced buyers immediately recognise.

Call us on

**0114 312 4994**

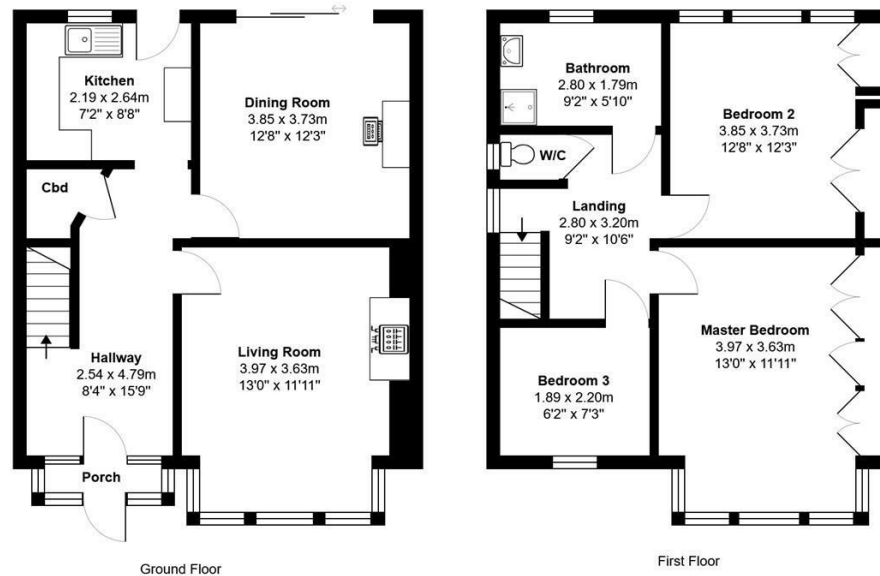
[info@highgatesstates.co.uk](mailto:info@highgatesstates.co.uk)

[www.highgatesstates.co.uk](http://www.highgatesstates.co.uk)

**Council Tax Band**

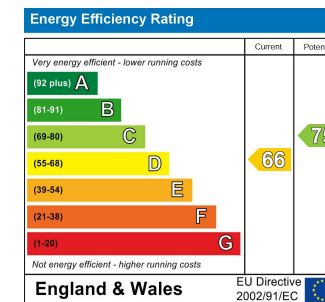
**C**

Westwick Road, Sheffield, S8



Total Area: 107.0 m<sup>2</sup> ... 1152 ft<sup>2</sup>

All measurements are approximate and for display purposes only



Agents Note: Whilst every care has been taken to prepare these particulars, they are for guidance purposes only. All measurements are approximate and are for general guidance purposes only and whilst every care has been taken to ensure their accuracy, they should not be relied upon and potential buyers are advised to recheck the measurements.